

# A parent's guide to Star Assessments



**STAR**<sup>™</sup>  
Math



**STAR**<sup>™</sup>  
Reading

## Q: What are Star Assessments?

A: **Star Assessments** are short tests that provide teachers with learning data. Star tests are computer adaptive, which means they adjust to each answer your child provides. This helps teachers get the best data to help your child in the shortest amount of testing time (about one-third of the time other tests take).

Your child may take a Star test for early literacy, math, reading, or other subjects of their teacher's choice.

## Q: What do teachers do with Star Assessments?

A: Teachers analyze the data they get from Star Assessments to learn what students already know and what they are ready to learn next, to monitor student growth, and to determine which students may need additional help. Star Assessments are heavily researched and scientifically proven to help teachers guide each student on his or her unique path to mastery.

## Q: What do Star Assessments do for my child?

A: By pinpointing exactly what your child knows, teachers can personalize your child's practice to keep them growing. Plus, short test times ensure your child spends more time learning and less time testing.

## Q: How can I help my child with their Star Assessments?

A: The best way to help your child with Star Assessments is to help them understand why they are taking the test: So their teacher knows exactly how to help them learn! For anxious children, it may be important to tell them that they cannot fail a Star test—as long as they do their best, the data generated from the test will help their teacher teach them more great things!

## Q: Where do I go if I have questions?

A: Your child's teacher is the best source of additional information about your child's progress with Star Assessments. Renaissance is committed to protecting student privacy and will not share data with anyone outside your child's authorized school staff.

### **About Star Reading**

Star Reading is a computer-adaptive test that measures student achievement on reading skills. As a student takes the assessment, the software selects items based on the student's responses. If the student answers the item correctly, the software increases the difficulty level of the next item. If the student answers incorrectly, the software lowers the difficulty level of the next item. By continually adjusting the difficulty of an item to what the student has shown she can or cannot do, the assessment is tailored to accurately measure each student's level of achievement. **Star Reading consists of 34 items and generally takes fewer than 30 minutes for the student to complete the assessment.**

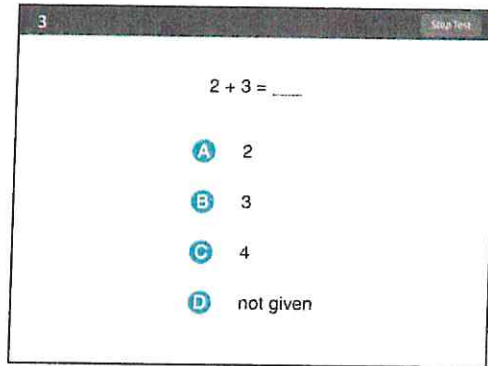
### **About Star Math**

Star Math is a computer-adaptive test that measures student achievement on math skills. As a student takes the assessment, the software selects items based on the student's responses. If the student answers the item correctly, the software increases the difficulty level of the next item. If the student answers incorrectly, the software lowers the difficulty level of the next item. By continually adjusting the difficulty of an item to what the student has shown she can or cannot do, the assessment is tailored to accurately measure each student's level of achievement. **Star Math consists of 34 items and takes approximately 20 minutes for the student to complete the assessment.**

# STAR Math Test Format Overview

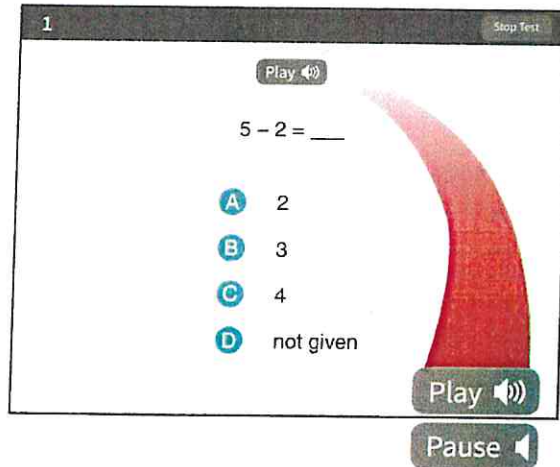
Please review the images and notes below to see what the Star Math test looks like.

This is what the questions look like.

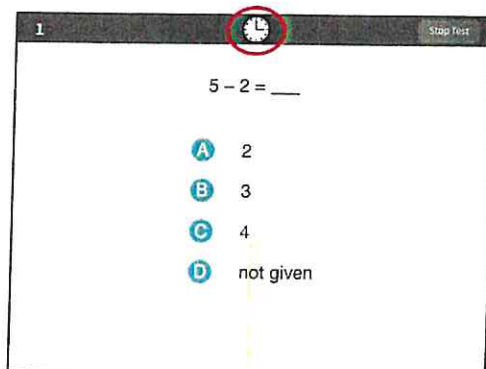


If you are using audio while taking the test, there will be controls in the upper part of the screen that you can use to pause, resume, or replay the audio for the current question.

You do *not* have to wait for the audio to finish before answering a question; you can enter your answer at any time.



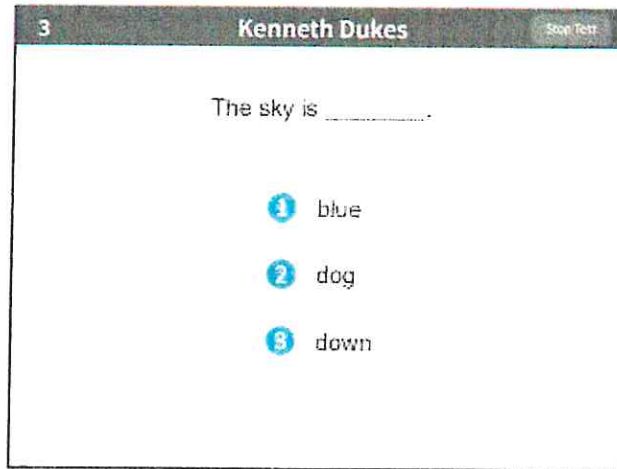
A clock in the top part of the screen means that time is almost up for this question. Choose your answer quickly.



## STAR Reading Test Format Overview

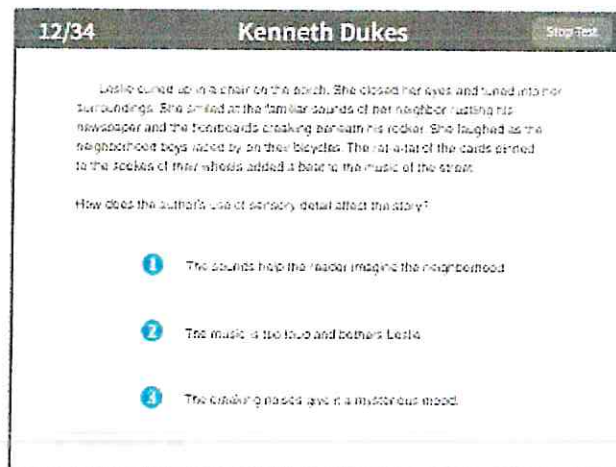
Please review the images and notes below to see what the Star Reading test looks like.

This is what the fill-in-the-blank test questions look like.



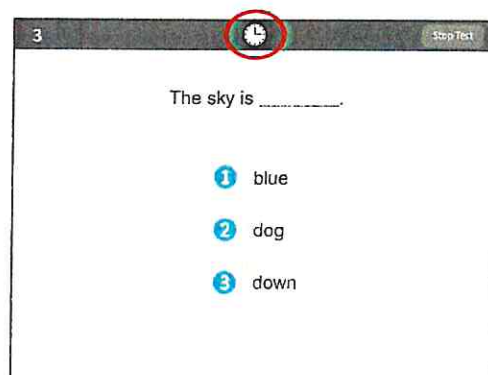
A screenshot of a STAR Reading test question interface. At the top left, the number '3' is displayed. At the top center, the name 'Kenneth Dukes' is shown. At the top right, there is a 'Stop Test' button. The main content area contains the text 'The sky is \_\_\_\_\_.' Below this text are three multiple-choice options, each with a blue circular icon containing a number: '1 blue', '2 dog', and '3 down'.

This is what the short-answer test questions look like.



A screenshot of a STAR Reading test question interface. At the top left, '12/34' is displayed. At the top center, the name 'Kenneth Dukes' is shown. At the top right, there is a 'Stop Test' button. The main content area contains a paragraph of text: 'Lestie curled up in a chair on the porch. She closed her eyes and tuned into her surroundings. She smiled at the familiar sounds of her neighbor rustling his newspaper and the footboards creaking beneath his rocker. She laughed as the neighborhood boys raced by on their bicycles. The rattle-rattle of the cards pinned to the socks of their mothers added a beat to the music of the street.' Below the paragraph is the question: 'How does the author's use of sensory detail affect the story?' There are three multiple-choice options, each with a blue circular icon containing a number: '1 The sounds help the reader imagine the neighborhood.', '2 The music is too loud and bothers Lestie.', and '3 The creaking noises give it a mysterious mood.'

A clock in the top part of the screen means that time is almost up for this question. Choose your answer quickly.



A screenshot of a STAR Reading test question interface, similar to the one above. At the top left, the number '3' is displayed. At the top center, the name 'Kenneth Dukes' is shown. At the top right, there is a 'Stop Test' button. In the top center, there is a clock icon. The main content area contains the text 'The sky is \_\_\_\_\_.' Below this text are three multiple-choice options, each with a blue circular icon containing a number: '1 blue', '2 dog', and '3 down'.